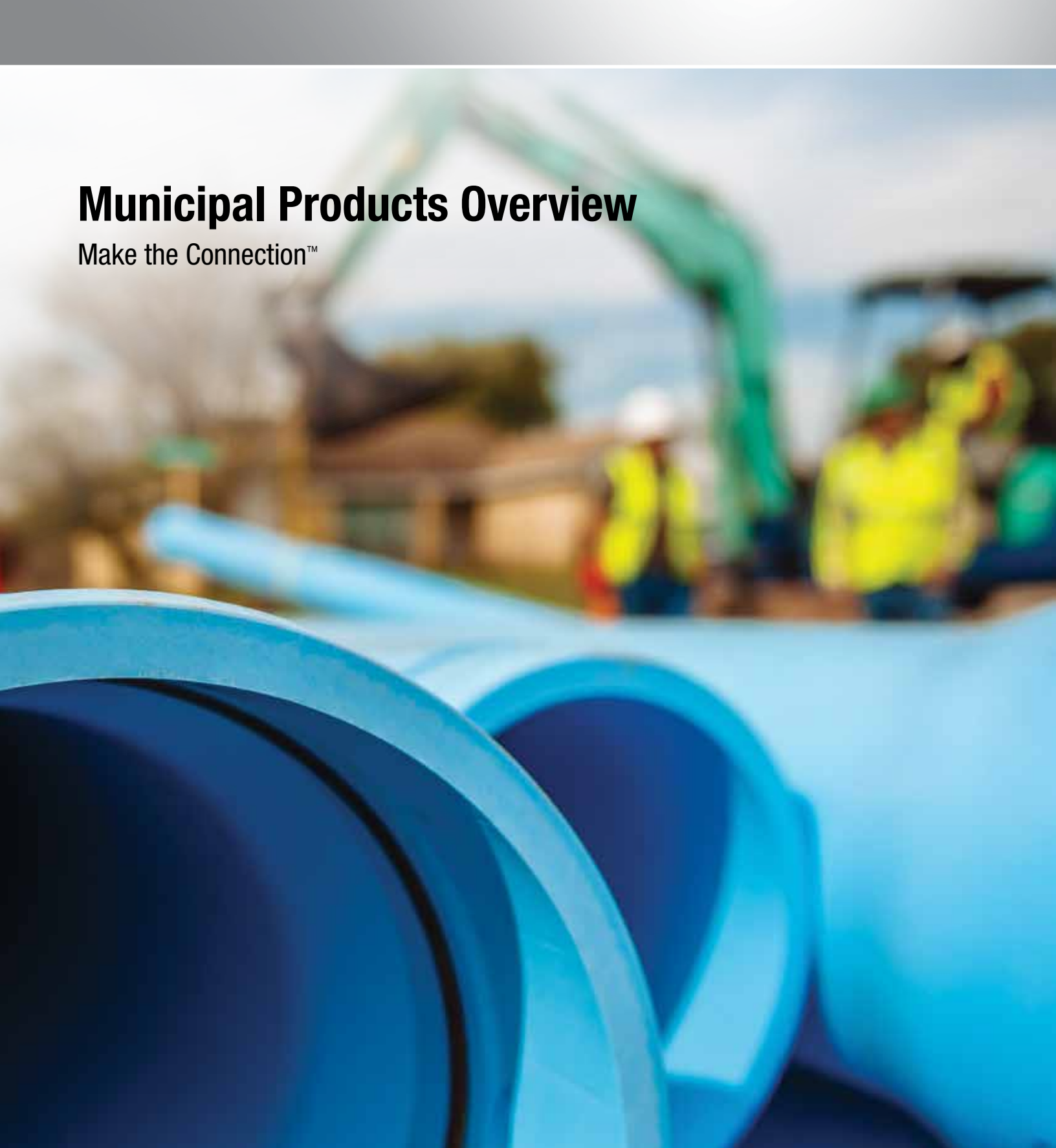


# Municipal Products Overview

Make the Connection™



# PVC: AMERICA'S PREFERRED MUNICIPAL PIPE

Our municipal waterworks and sewer infrastructure demands pipe systems that are proven to last. Our water and wastewater infrastructure is in critical condition and PVC pipe has become the clear economic choice for long-lasting functionality. Today, PVC pipe is specified more than twice as much as any other pipe material for its lifetime durability, corrosion resistance and ease of installation.

NAPCO's Municipal PVC Pipe Solutions are proven for potable water, gravity & force main sewers, and the growing use of water reclamation pipe as potable water becomes a precious commodity in the draught regions of our country. Repairs and new installations are simply easier and more cost effective with NAPCO's PVC pipe systems:



- Corrosive and chemical resistant, inside and out
- Segmented pipe for simple assembly in restrictive job site conditions
- Certa-Lok® restrained joint pipe systems are completely non-metallic
- More dimensionally stable than HDPE and faster to install & repair than fused joints
- Proven solutions for trenchless & open-cut applications

- Available with Certa-Lok Technology for restrained joint applications
- UV/Impact-resistant Yelomine® formulation available for bypass and temporary pipe systems
- Products are selectively listed, see product specification sheets for industry listings:

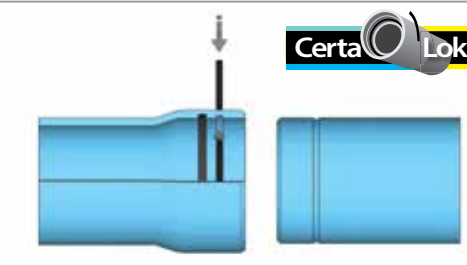


## MAKE THE CONNECTION



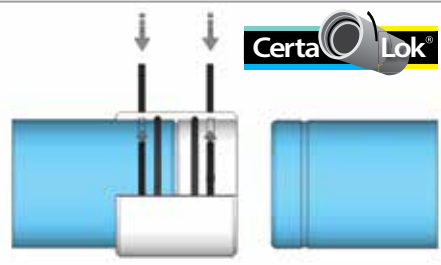
**IB: (Bell & Spigot)**

- Water, Sewer, & Reclaim
- Open cut installation
- CIOD: AWWA C900
- IPS: ASTM D2241
- PSM: ASTM D3034/F679
- Rieber Gasket/ASTM F477



**RJIB: (Restrained Joint Integral Bell)**

- Water, Sewer, & Reclaim
- Trenchless or open-cut installation
- CIOD: C900 Certa-Lok
- IPS: D2241 Certa-Lok
- Certa-Flo Gravity Sewer
- Yelomine – temporary bypass
- 4" through 12"
- Certa-Com electrical/communication
- O-ring or Profile Gasket/ASTM F477



**RJ: (Restrained Joint Coupled)**

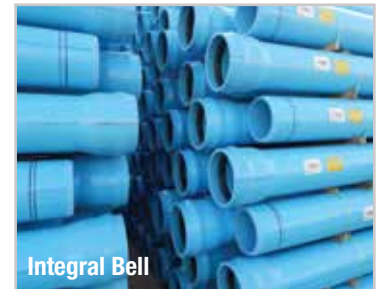
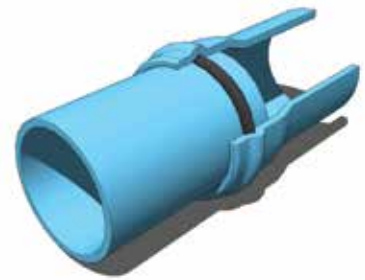
- Water, Sewer, & Reclaim
- Trenchless or open-cut installation
- CIOD: C900 Certa-Lok
- IPS: D2241 Certa-Lok
- 2" through 24"
- O-ring or Profile Gasket/ASTM F477

## IB: INTEGRAL BELL

Our Integral Bell & Spigot design is excellent for open-cut applications where the affordability and durability of PVC are required.

Pressure Pipe	Pipe Sizes	DR	Pressure Class
<b>CIOD: AWWA C900</b> Potable Water, Force Main & Reclaim	30", 36"	51	80 psi
	16" thru 36"	41	100 psi
	16" thru 36"	32.5	125 psi
	4" thru 36"	25	165 psi
	14" thru 36"	21	200 psi
	4" thru 24"	18	235 psi
	4" thru 16"	14	305 psi
<b>IPS: ASTM D2241</b> Potable Water, Force Main & Reclaim	1.5" thru 12"	SDR 13.5 thru 41	100 thru 315 psi

Gravity Sewer	Pipe Sizes	SDR	Pipe Stiffness
<b>PSM: ASTM D3034</b>	4" thru 15"	SDR 35	46 psi
	4" thru 15"	SDR 26	115 psi
	4", 6"	SDR 23.5	153 psi
<b>PSM: ASTM F679</b>	18" thru 36"	PS 46	46 psi
	18" thru 36"	PS 115	115 psi



Integral Bell

## RJIB: RESTRAINED JOINT INTEGRAL BELL

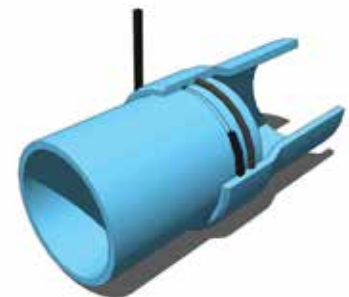
Certa-Lok RJIB has a smooth profile perfect for horizontal directional drilling & static pipe bursting applications. Available in Certa-Lok D2241/RJIB with Yelomine for temporary bypass applications.

Pressure Pipe	Pipe Sizes	DR	Pressure Class
<b>CIOD: C900/RJIB</b> <b>Certa-Lok</b> Potable Water, Force Main & Reclaim	6" thru 12"	18	235 psi
	6" thru 12"	14	305 psi
<b>IPS: D2241/RJIB</b> <b>Certa-Lok</b> <b>with Yelomine</b> Potable Water, Force Main, Reclaim, Aboveground & Temporary Bypass	4" thru 8"	21	200 psi
	4" thru 8"	17	250 psi
Yelomine is a unique modified PVC compound designed to be sunlight & impact resistant for reliable above ground use. NSF approved for potable water use.			

Gravity Sewer	Pipe Sizes	DR	Pipe Stiffness
<b>Certa-Flo IPS</b> <b>Gravity Sewer</b>	10", 12"	26	115 psi
	4", 6", 8"	21	224 psi

Conduit	Pipe Sizes	Schedule
<b>Certa-Com</b>	3", 4", 5", 6"	40
	8"	80

Certa-Com PVC pipe features Certa-Lok, the industry original non-metallic mechanically restrained joint system designed for use in electrical & communication conduit systems. Certa-Com PVC pipe is made in iron pipe size (IPS) outside diameters and meets all performance requirements of NEMA TC-2 and UL 651.



D2241/RJIB  
Certa-Lok with  
Yelomine



Certa-Com

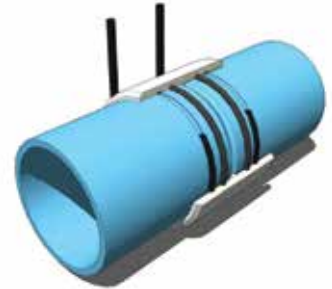


# RJ: RESTRAINED JOINT – COUPLED

Certa-Lok RJ offers design flexibility for trenchless or open-cut applications. Available with Yelomine for temporary bypass applications.

Pressure Pipe	Pipe Sizes	DR	Pressure Class
<b>CIOD: C900/RJ Certa-Lok</b> Potable Water, Force Main & Reclaim	14" thru 24"	25	165 psi
	14" thru 24"	21	200 psi
	4" thru 24"	18	235 psi
	4" thru 12", 16"	14	305 psi
<b>IPS: D2241/RJ Certa-Lok with Yelomine</b> Potable Water, Force Main, Reclaim, Aboveground & Temporary Bypass	6" thru 12"	32.5	125 psi
	6" thru 12"	26	160 psi
	16"	26	90 psi
	4" thru 12", 16"	21	200 psi
	2" thru 8"	17	250 psi
	4" thru 8"	13.5	315 psi
	4" thru 8"	12.43	350 psi

Yelomine is a unique modified PVC compound designed to be sunlight & impact resistant for reliable above ground use. NSF approved for potable water use.



## WHY SEGMENTED PVC?

Segmented PVC pipe solutions offer the greatest combination of versatility, durability and longevity of any municipal pipe system available. NAPCO's non-metallic restrained & unrestrained pipe systems can be used interchangeably for projects that require both open-cut and trenchless installations. Segmented pipe allows for smaller pipe staging area and can greatly reduce community disruption in high traffic site conditions (intersections, under highways, roads, walkways, etc.)

With much of our nation's municipal water and wastewater infrastructure in critical condition, longevity & design life are often the most important factors for choosing pipe materials. PVC is both proven and most commonly specified by municipalities across the country; up to 80% of municipalities specify PVC pipe according to a recent trenchless pipe material guide survey.

### COMMUNITY CONVENIENCE – LESS JOB SITE STAGING AREA REQUIRED



### BEST LIFE-COST MATERIAL – PVC DOES NOT CORRODE, INSIDE OR OUT

PVC pipe is easier to maintain & does not corrode (inside or out) like ductile iron so it offers much better operational costs advantages over the life of the pipe system.

Segmented PVC pipe is faster to install than fused pipe systems and does not require expensive equipment or long staging areas.



*"PVC is the proven material when performance counts. It has an impressive track record for longevity, durability, low maintenance and ease of assembly. Owners attribute its exceptional performance to its corrosion resistance, chemical resistance and deep- insertion, bell-and-spigot, gasketed joints."*

Craig Fisher, Former Technical Director  
for the Uni-Bell PVC Pipe Association





**1.855.624.7473 | [napcopipe.com](http://napcopipe.com)**

NAPCO  
2801 Post Oak Blvd., Suite 600  
Houston, TX 77056